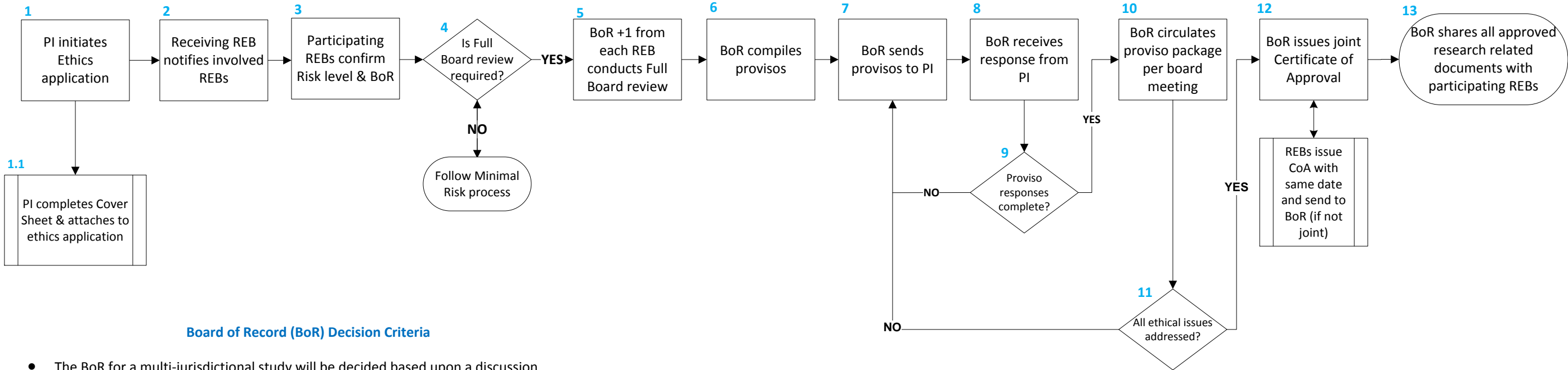


# Harmonized Above Minimal Risk Ethics Review Model – Initial Review



### Board of Record (BoR) Decision Criteria

- The BoR for a multi-jurisdictional study will be decided based upon a discussion between the involved REBs, and taking into consideration the following elements:
  - a. Location of majority of participants and/or study team;
  - b. Which institution is best placed to mitigate risk to participants/data;
  - c. The expertise of the involved REBs (for example: BCCA and cancer studies);
  - d. Proportion of the study that is hospital-based and community-based; and
  - e. Other unique factors that the participating boards agree are relevant.
- These are guidelines only and participating REBs will use their best judgment to determine the BoR on a case-by-case basis and, where appropriate, in consultation with the PI.
- If Northern Health is the primary location for the study, the PI’s home institution will be the BoR, and the Northern Health (NH) Research Committee will be included in the process for proportionate review. In the event the PI is a NH employee, UNBC will act as the BoR.

# Harmonized Above Minimal Risk Ethics Review Model – Continuing Review

